

Oliver Rayns






ESTATE AGENTS

See more photos details at...

oliverrayns.com

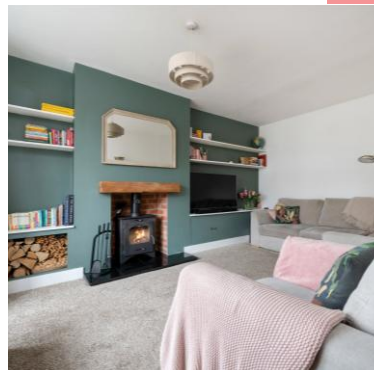
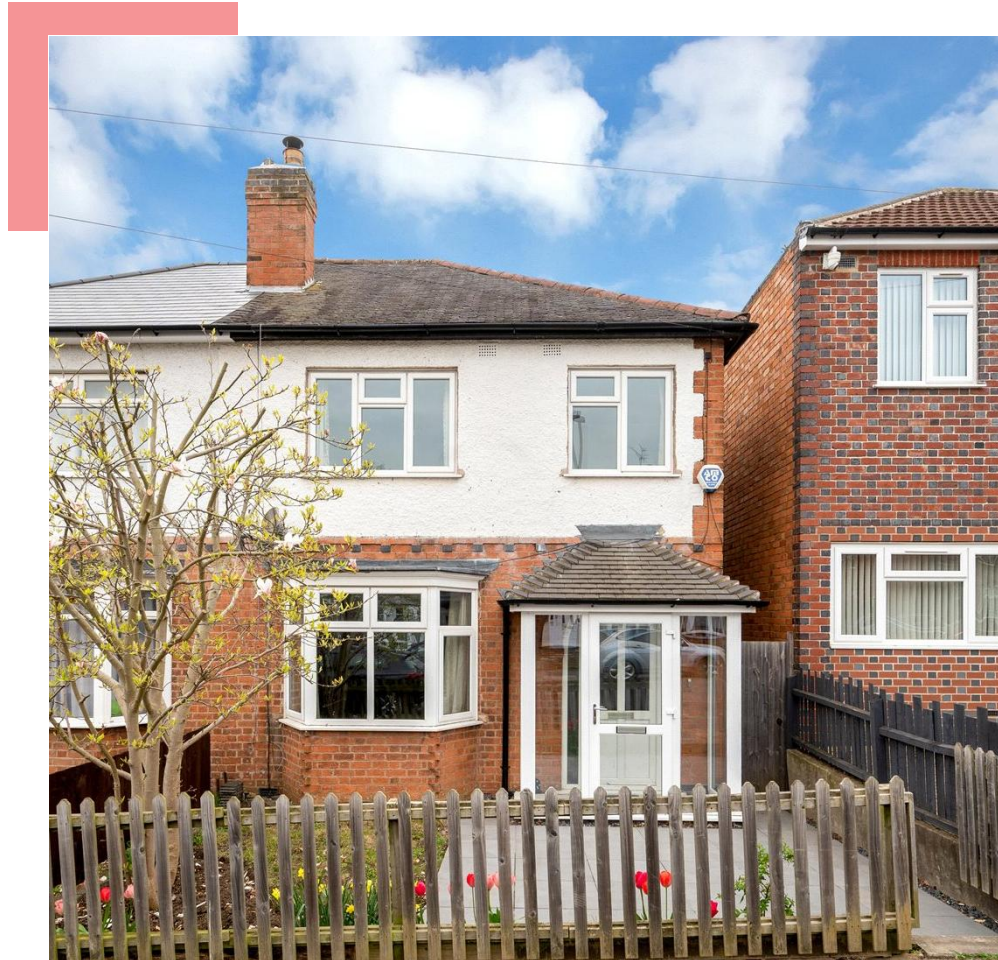
Situated on the ever-popular Raeburn Road in Clarendon Park, this extended three-bedroom semi-detached home offers spacious and well-balanced living, ideal for modern family living. To the rear, there is a shared driveway providing convenient off-road parking.

At a glance...

-  Bedrooms: 3
-  Bathrooms: 1
-  Reception Rooms: 1
-  Parking: Off Street
-  Size: 1150ft²

Asking Price:

£340,000



Raeburn Road, Clarendon Park